

Name: _____

Read and Discover

Correlative Conjunctions

Lesson 40

8

For your history report, you can focus on either the **Underground Railroad** or the **Civil War**.

Circle the two words that link the boldfaced phrases.

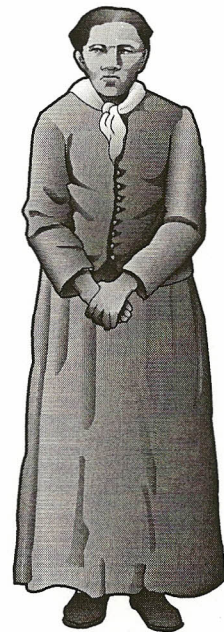
Correlative conjunctions always appear in pairs. They connect words or groups of words and provide more emphasis than coordinating conjunctions. Some common correlative conjunctions are *both...and*, *either...or*, *neither...nor*, *not only...but (also)*, and *whether...or*.

See Handbook Section 22

Part 1

Circle the correlative conjunctions and coordinating conjunctions in these sentences. If a sentence contains correlative conjunctions, write *COR*. If the sentence does not contain correlative conjunctions, write *X*.

1. The Underground Railroad flourished between 1830 and 1860. _____
2. It was a network of secret routes and safe houses that slaves used to escape to freedom. _____
3. Routes led not only north but also south. _____
4. Many escaped slaves fled to either Canada or Mexico. _____
5. White abolitionists and free African Americans worked together to help the fugitives. _____
6. Abolitionists believed that slavery was wrong, but not all wanted to help fugitive slaves. _____
7. Sometimes it was hard for a fugitive to know whether to trust a person or to avoid him or her. _____
8. A fugitive seeking shelter might check to see whether a lantern outside a safe house was lit or unlit. _____
9. Harriet Tubman not only freed herself from slavery but also liberated scores of other enslaved people. _____
10. Neither Tubman nor any of her underground railroad "passengers" were ever captured. _____
11. It was both Tubman's clever techniques and her determination that helped her lead nearly 300 enslaved people to freedom. _____
12. The Harriet Tubman Home, located in Auburn, New York, preserves Tubman's legacy in the place where she lived and died in freedom. _____



During the Civil War, Harriet Tubman served as a nurse, scout, and spy for the Union Army.